



**SLIDING  
WINDOW**

# **STEEL CLAD BUILDING SERIES**

ALUMINIUM DOORS AND WINDOWS

"Invite in the natural light with your low maintenance slimline design"

### FEATURES

- **Smart design** | combination finned + face fixed
- **Trim bead + extension** | flashing alternative + hide fixings
- **Aesthetics** | robust slimline frame for maximum view
- **Frame** | 48mm powder coated aluminium
- **Glass** | standard 4mm
- **Reglazing** | sashes independent of frame to facilitate reglazing
- **Cladding** | suits common steel shed profile types

### Does your project have these requirements?

- **Compliance** – to cyclonic regions
- **BAL** (Bushfire Attack Level)
- **Installation** | fast + easier at end of build
- **Complies** | to Australian Standards AS2047
- **Guarantee** | 6 year "peace of mind"

### OPTIONS

- **Custom sizes** | to suit your specific build
- **Timber reveal kits** | primed, poly flashing + fixing screws
- **Aluminium reveals + architraves** | for lining
- **Colour choice** | Colorbond + other ranges
- **Glass** | clear, obscure, tint + energy efficient
- **Screens** | permanent vent, barrier, mesh, insect
- **Security** | stainless steel, "Kid Safe", keyed locks + restrictable
- **Framing Support** | engineered for windows

### HARDWARE

- **Handles** | easy accessed, centrally located
- **Rollers** | quality stainless steel ball bearings for durability, smooth sliding + non-corrosive nylon Volutem consequi num rehentem.

### WINDOWS | Standard Sizes

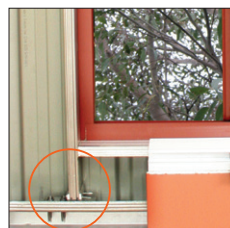
Sliding	Sliding Coupled	Sliding Window Wall	Barn
790h x 589w	1200h x 2040w	1810h x 895w	475h x 840w
790h x 816w			
790h x 1274w			
790h x 1505w			
790h x 1731w			
895h x 1274w			
895h x 1505w			
895h x 1731w			
1200h x 970w			



Side view with Trim Bead



With Trim Bead Extension  
Note: Installation depends on your cladding position



Engineered Framing Support for windows

*Delivering your Project with care...*

### CONTACT DETAILS